

Pre-installation checklist for the Pen Computer Systems Clinical Audit Tool (PEN CAT)

The Pen CAT is easy to install, but practices should check their system for a few pre-requisites before starting installation:

Note: Some of the tasks described below may require you to sign on to your computer as an Administrator.

1. Check you have sufficient computer memory (RAM)

Your computer will need to have at least 512Mb of RAM or more. To check how much you have:

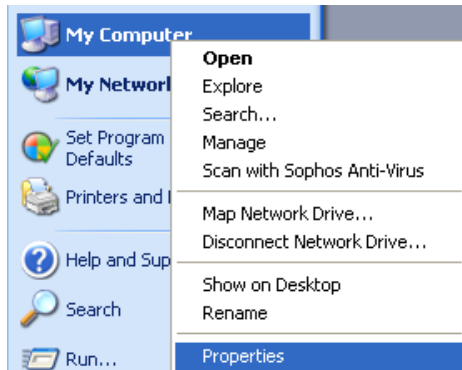
1. Click "Start":



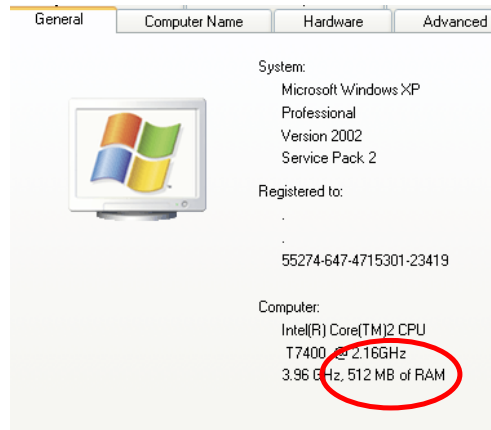
2. **Right-click** on "My Computer":



3. And click "Properties":



4. Check your RAM (circled below):



2. Check that your Windows system is up-to-date

It is preferable, but usually not essential, that you have installed the latest updates to your machine. To double-check,

1. Click "Start":



2. Click "All Programs":



3. Then click "Windows Update":



This will launch Internet Explorer and open the special Windows Update website. Follow the instructions for the "Express" installation (the high-priority updates).

3. Check that you have installed the .Net Framework version 2

Once you're satisfied your computer is up to date check to see if you have the latest .Net Framework (pronounced: dot net framework).

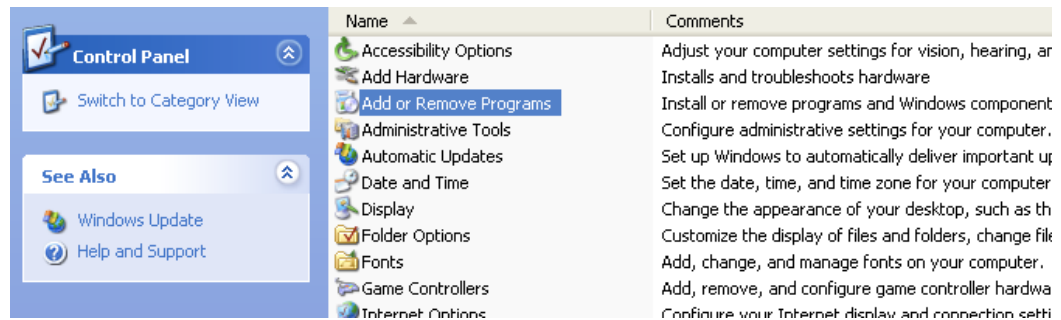
1. Click "Start":



2. Click "Control Panel":



3. Open the "Add or Remove Programs" tool:



4. Check to see if you have installed the Microsoft .Net Framework:



If you don't have the .Net Framework or have a version earlier than version 2, download the latest version by going to the website: www.microsoft.com/downloads/ and look for the *.Net Framework Version 2.0 Redistributable Package* (it will probably be in the Popular Downloads section at the top of the page).

Once the package is downloaded, double-click on it to install it and follow the instructions (click "Run") if prompted to:



Check that it has been installed by going back to the "Add or Remove Programs" tool and checking that it is now listed as version 2.

Once these steps are completed, you should be able to install the Pen CAT without trouble. Enjoy!

Technical Note:

Even if you have successfully followed all the above steps, you may have trouble installing the Clinical Audit Tool.

When attempting to install, you may get a message indicating a "CGI error". Or, when attempting to authenticate, you may find that it won't login even though you have the correct user name and password.

These problems are most likely caused by your system's Proxy Server. Some Proxy Servers will prevent you from installing the Clinical Audit Tool, which uses a very new deployment technology developed by Microsoft.

If you cannot install the Tool, please contact your Network Administrator or IT support person and advise them of this note. There is a hotfix supplied by Microsoft that may help in allowing installation to occur behind your Proxy Server. The hotfix can be downloaded here:

http://www.myhealthpractice.com.au/DOTNETHOTFIX_Proxy_KB917952.zip

If your Network Administrator or IT support contact is unable to help, please contact your division.